

# Memorial Vases

Metalcraft flower vases are available in a variety of designs and sizes, each as stylish and elegant as the next. They are as strong as they are beautiful, thanks to the die-cast aluminum construction and exclusive coating process which adds exterior durability without compromising beauty. It is this commitment to quality and a dedicated craftsmanship that makes Metalcraft vases stand out among all others.

All Metalcraft vases can be securely mounted to an upright memorial by any of the four available fastener options. In addition, many of the vase designs are offered in the Flush Ground Unit System, which provides a convenient way to meet cemetery maintenance regulations. The patented Cor-Loc® System was specifically created as a mounting device to attach the ground unit's ring and canister to a grass marker.



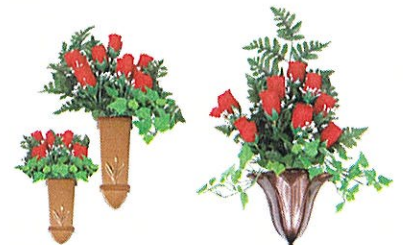
## Upright Memorial Vases

[View Products](#)



## Lawn/Flush Ground Vases

[View Products](#)



## Wall Mount Vases

[View Products](#)



## Bronze Replacement Vases

[View Products](#)

U.S. Metalcraft, Inc.  
101 S. Franklin Street  
P.O. Box 308  
Delphos, OH 45833

Phone: 800.633.1190

Fax: 888.695.0235

Email: [info@usmetalcraft.com](mailto:info@usmetalcraft.com)

Monday - Friday: 8:00AM - 5:00PM  
EST

### Explore by Collection



#### Memorial

##### Vases

Browse products



#### Cremation

##### Urns

Browse products



#### Accessory

##### Products

Browse products



### Associations

Monument Builders of North America

Catholic Cemetery Conference

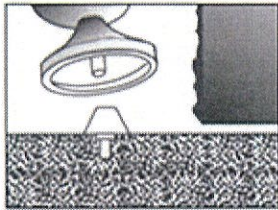
Funeral and Memorial Information Council

International Memorialization Supply Association

International Cemetery Cremation and Funeral Home Association

## Fastener Installation Methods

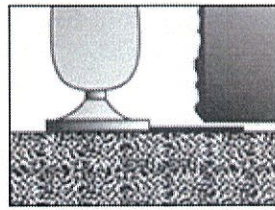
Metalcraft cemetery memorial flower vases have five different ways to be attached to a memorial; lug, strap, tape, bevel marker wedge, and Cor-Loc®.



### Lug

A rosette with one 5/16" x 1-1/2" threaded lug is screwed and epoxied into a hole drilled in the memorial base. The vase is then screwed down onto the rosette.

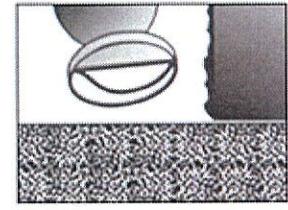
The vase can be removed by unscrewing it from the rosette, or securely attached by adding Loc-Tite to the threads before screwing the vase down.



### Strap

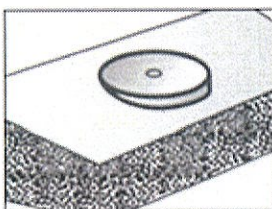
A heavy gauge stainless steel strap bolts to the bottom of the vase and inserts between the die and the base of the monument.

The vase cannot be removed without moving the die. A perfect solution.



### Tape

Double sided tape is used between the vase and the memorial. The tape requires a polished surface on the granite and the high-strength tape requires 100 lbs. of force to break the seal. Weatherproof, easy to mount, and permanent.



## Bevel Marker Wedge

Heavy die-cast aluminum color matched wedges allow the mounting of vases on 1-1/2" bevel markers. Wedges are matched to fit most of our vases using either the double-sided tape, or a lug. The bevel marker wedge is permanent, easy to mount, and eliminates ground obstruction around the marker.

## Cor-Loc® Installation Method

[Click here](#) to view Cor-Loc®  
Installation Method

U.S. Metalcraft, Inc.  
101 S. Franklin Street  
P.O. Box 308  
Delphos, OH 45833

Phone: 800.633.1190  
Fax: 888.695.0235  
Email: [info@usmetalcraft.com](mailto:info@usmetalcraft.com)

Monday - Friday: 8:00AM - 5:00PM  
EST

### Explore by Collection



#### Memorial

##### Vases

Browse  
products



#### Cremation

##### Urns

Browse  
products



#### Accessory Products

Browse  
products



### Associations

Monument Builders of  
North America

Catholic Cemetery  
Conference

Funeral and Memorial  
Information Council

International  
Memorialization Supply  
Association

International Cemetery  
Cremation and Funeral  
Home Association



# Upright Memorial Vases



## Gem

[Product Details](#) →



## Cameo

[Product Details](#) →



## Crest

[Product Details](#) →



## Regal

[Product Details](#) →



## Regal Cross

[Product Details](#) →



## 4x10 Paragon

[Product Details](#) →

# Lawn/Flush Ground Vases



## **Gem Ground**

[Product Details](#) →



## **Crest Ground**

[Product Details](#) →



## **Regal Ground**

[Product Details](#) →

# Wall Mount Vases



## Large Patriot

[Product Details](#) →



## Small Patriot

[Product Details](#) →



## Monarch

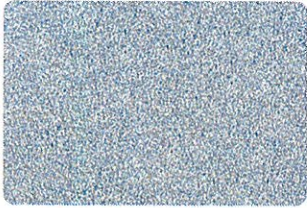
[Product Details](#) →



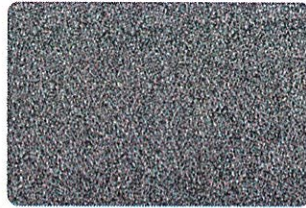
## Ring Vase

[Product Details](#) →

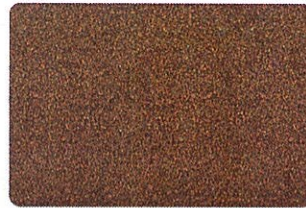
## Color Choices



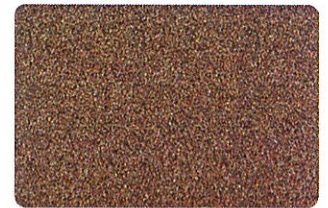
Silver Gray



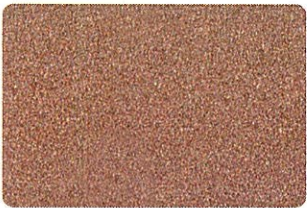
Dark Gray



Bronze



Missouri  
Pink



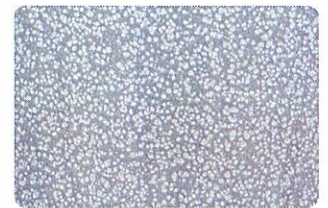
Sunset Rose



Sapphire  
Blue



Ebony



Metalcraft  
Gray



Ruby



White  
Marble



Mahogany



Statuary

---





## Lids

The re-engineered Vase Lid with an Integrated Flower Holder will be included in all of Metalcraft's Memorial Vases, except the Tiara and 6x10 Paragon vases.

Standard Lid

Cameo Lid

Medallion Lid

The re-engineered Vase Lid with Integrated Flower Holder fits in a Gem, Crest, 4x10 Paragon, Crown, Classic, Regal, Regal-Cross memorial vases.

### Explore by Collection



Memorial

Vases

Browse  
products →

Cremation

### Associations

Monument Builders of  
North America

Catholic Cemetery  
Conference

Funeral and Memorial  
Information Council

U.S. Metalcraft, Inc.  
101 S. Franklin Street  
P.O. Box 308  
Delphos, OH 45833

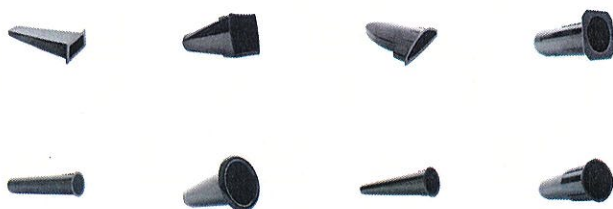
Phone: 800.633.1190

Fax: 888.695.0235

Email: [info@usmetalcraft.com](mailto:info@usmetalcraft.com)

## Liners

A plastic liner is included with all of Metalcraft's vase designs.



### Explore by Collection

U.S. Metalcraft, Inc.  
101 S. Franklin Street  
P.O. Box 308  
Delphos, OH 45833

Phone: 800.633.1190

Fax: 888.695.0235

Email: [info@usmetalcraft.com](mailto:info@usmetalcraft.com)

Monday - Friday: 8:00AM - 5:00PM  
EST



#### Memorial

##### Vases

Browse products



#### Cremation

##### Urns

Browse products



### Associations

Monument Builders of  
North America

Catholic Cemetery  
Conference

Funeral and Memorial  
Information Council

International  
Memorialization Supply  
Association